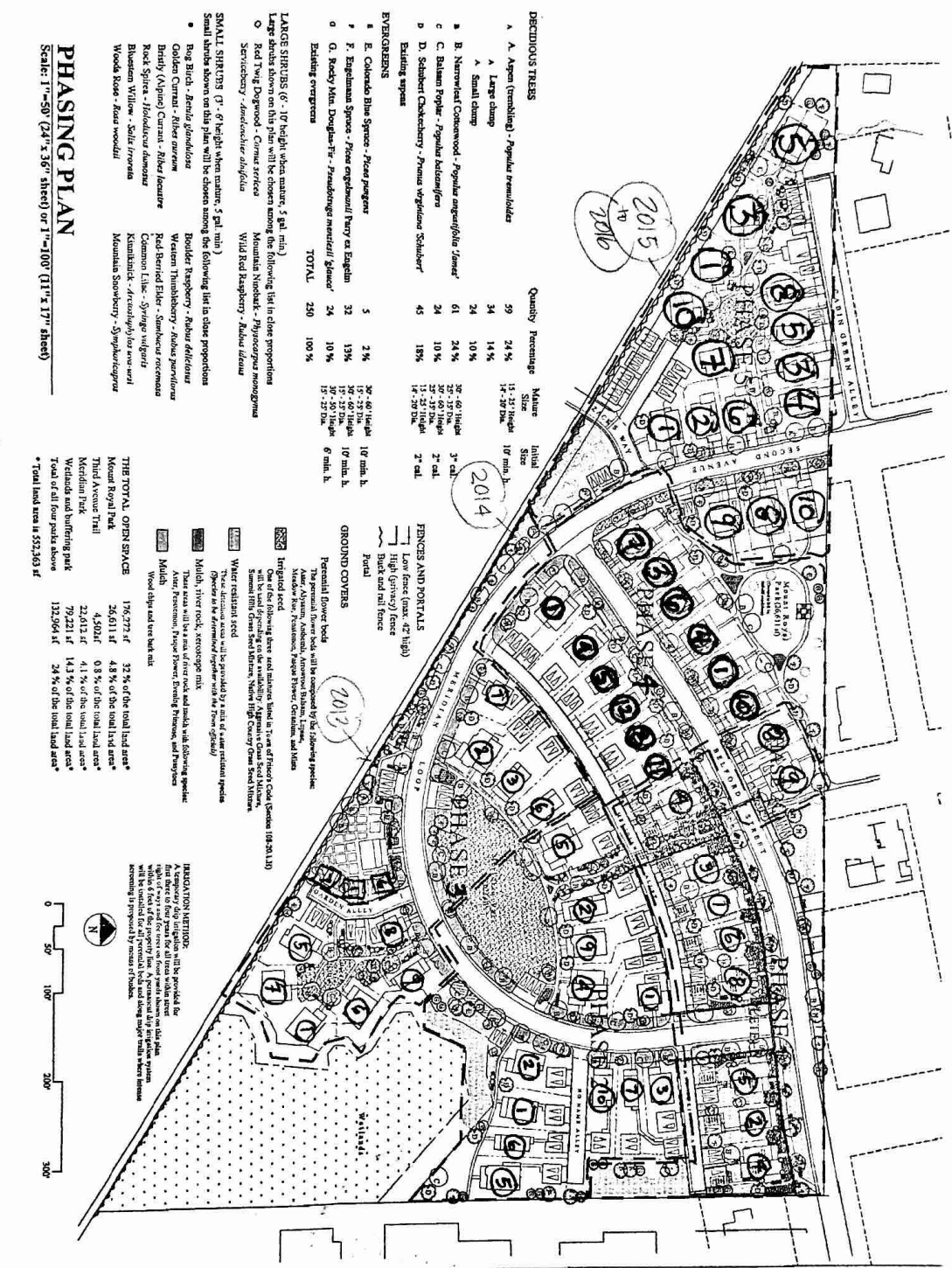


Peak One Neighborhood Color Schemes



DECIDUOUS TREES

Quantity	Percentage	Mature Size	Height
A. Aspen (remnant) - <i>Populus tremuloides</i>	59	15-25' High	10 min. h.
A. Large clump	34	14-20' High	10 min. h.
A. Small clump	24	10-15' High	7-8' tall
B. Norway Spruce - <i>Abies balsamica</i>	61	30-40' High	3" dia.
C. Balsam Poplar - <i>Populus balsamifera</i>	24	25-35' High	2" cal.
D. Schubert Coleocarya - <i>Prunus virginiana</i> 'Schubert'	43	14-20' High	2" cal.
Existing species			
EVERGREENS			
E. Colorado Blue Spruce - <i>Picea pungens</i>	5	30-40' High	10 min. h.
F. Engelmann Spruce - <i>Picea engelmannii</i> 'Perry ex Engelm'	32	30-40' High	10 min. h.
G. Rocky Mtn. Douglas-Fir - <i>Pseudotsuga menziesii</i> 'Glauca'	24	30-50' High	6 min. h.
Existing evergreens			
TOTAL	250	100%	

LARGE SHRUBS (6' - 10' height when mature, 5 gal. min.)

- Large shrubs shown on this plan will be chosen among the following list in close proportion to the quantities shown in the table above.
- Red Yew Dogwood - *Cornus stolonifera*
- Servicetree - *Amelanchier alnifolia*
- Wild Red Raspberry - *Rubus idaeus*
- Mountain Shrublet - *Physocarpus monogynus*
- Wild Red Raspberry - *Rubus idaeus*

SMALL SHRUBS (2' - 6' height when mature, 5 gal. min.)

- Small shrubs shown on this plan will be chosen among the following list in close proportion to the quantities shown in the table above.
- Ring Birch - *Betula glandulosa*
- Golden Currant - *Ribes aureum*
- Blindly (Alyps) Currant - *Ribes lacustris*
- Rock Spirea - *Spiraea douglasii*
- Balsam Willow - *Salix tremula*
- Wood Spiree - *Rosa woodsii*
- Banana Shrub - *Yucca filamentosa*
- Western Honeysuckle - *Lonicera occidentalis*
- Red Stemmed Elder - *Sambucus racemosa*
- Common Elm - *Ulmus alatus*
- Kumquat - *Eriobotrya japonica*
- Mountain Snowberry - *Symphoricarpos*

PHASING PLAN

Scale: 1"=50' (24" x 36" sheet) or 1"=100' (11" x 17" sheet)

THE TOTAL OPEN SPACE

176,377 sf	32% of the total land area*
4,501 sf	0.8% of the total land area*
22,412 sf	4.1% of the total land area*
79,221 sf	14.3% of the total land area*
132,264 sf	24% of the total land area*

LANDSCAPE NETWORK

Landscaping network will be provided for the site. The network will include a series of paths and trails that will be provided for all users within the site. The network will be provided for all users within the site. The network will be provided for all users within the site.

WOLFF • LYON
ARCHITECTS

PEAK ONE
NEIGHBORHOOD
PHASING PLAN

PHASING PLAN

GENERAL NOTES:
1. THE PHASING PLAN IS A PRELIMINARY PLAN AND IS SUBJECT TO CHANGE WITHOUT NOTICE.
2. THE PHASING PLAN IS A PRELIMINARY PLAN AND IS SUBJECT TO CHANGE WITHOUT NOTICE.
3. THE PHASING PLAN IS A PRELIMINARY PLAN AND IS SUBJECT TO CHANGE WITHOUT NOTICE.
4. THE PHASING PLAN IS A PRELIMINARY PLAN AND IS SUBJECT TO CHANGE WITHOUT NOTICE.
5. THE PHASING PLAN IS A PRELIMINARY PLAN AND IS SUBJECT TO CHANGE WITHOUT NOTICE.